

NHS Derby and Derbyshire Three-year Mental Health Inpatient Strategic Plan 2024/5 – 2027/8

Executive Briefing Pack



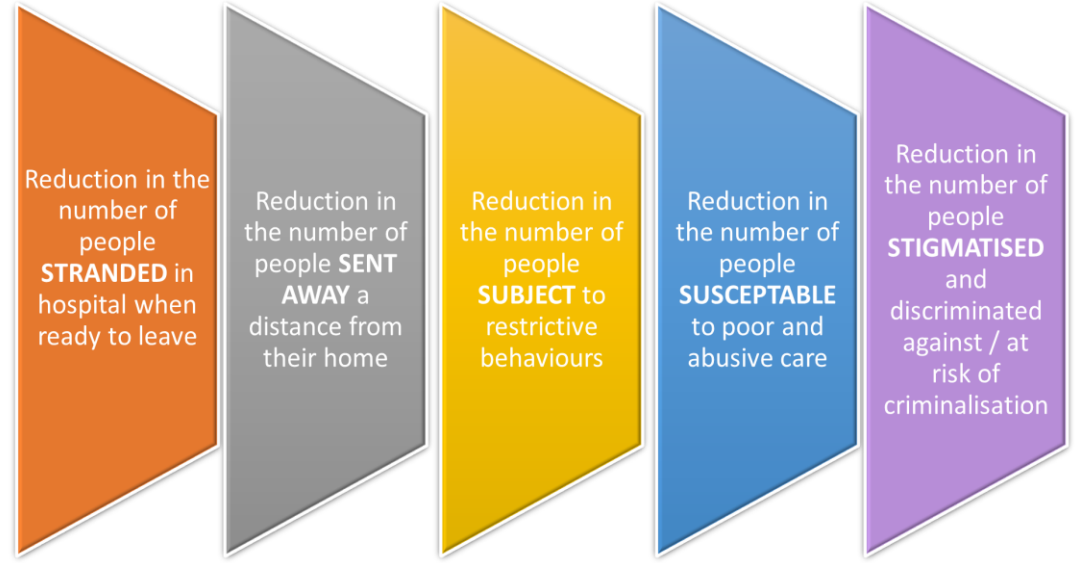
The Derbyshire
VCSE sector
Alliance



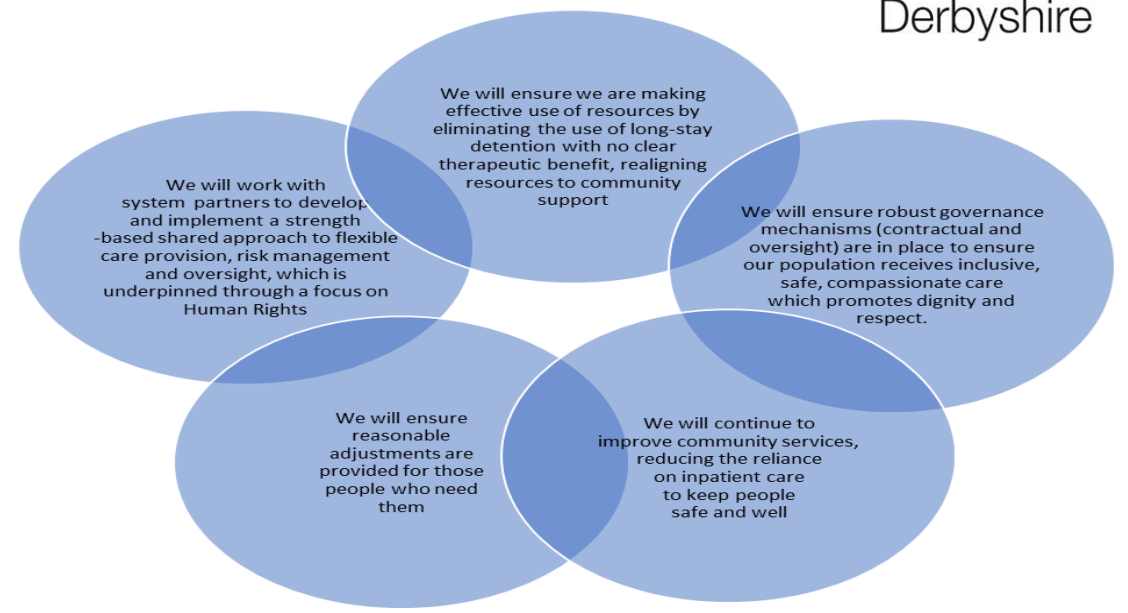
Derby City Council



Our Vision



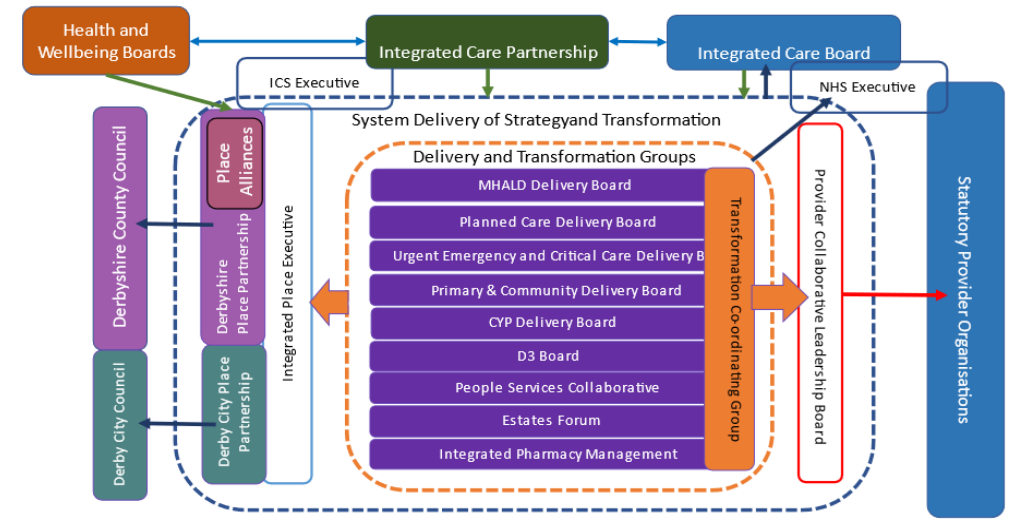
Our Guiding Policies For Action



Our Shared Agreements



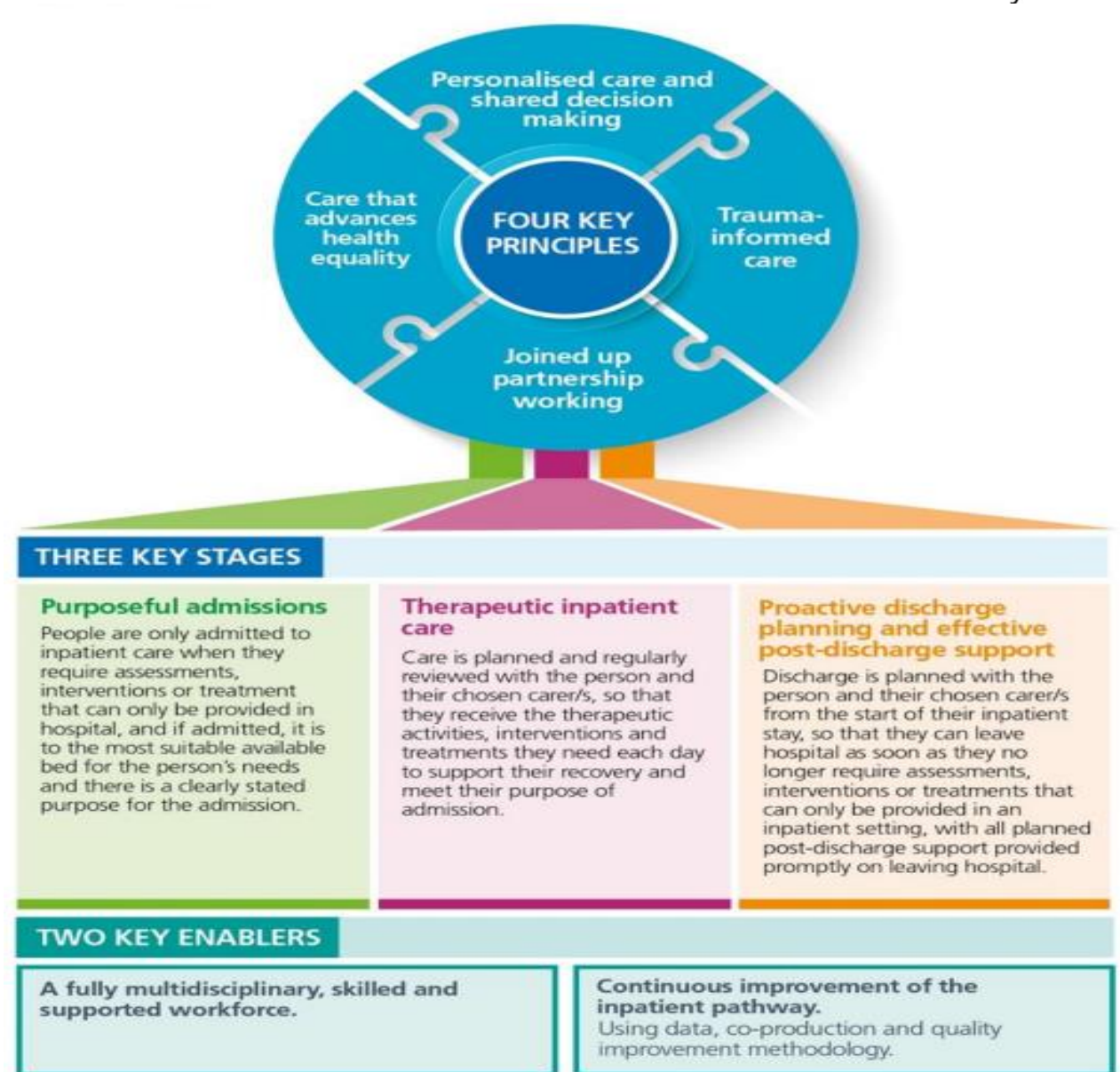
Our Governance and Oversight Process



Our strategic plan aims to build on the work undertaken within the Derbyshire health and care system over the past three years to transform the Mental Health community and urgent care offers by focussing on the improvement required within inpatient services to provide safe, high quality, therapeutic care.

The case for change is clear both at a national and local level and this document sets out the strategic actions to be taken across Derby and Derbyshire to realign the mental health pathway to ensure right care is being delivered in the right place, at the right time, and in the least restrictive environment.

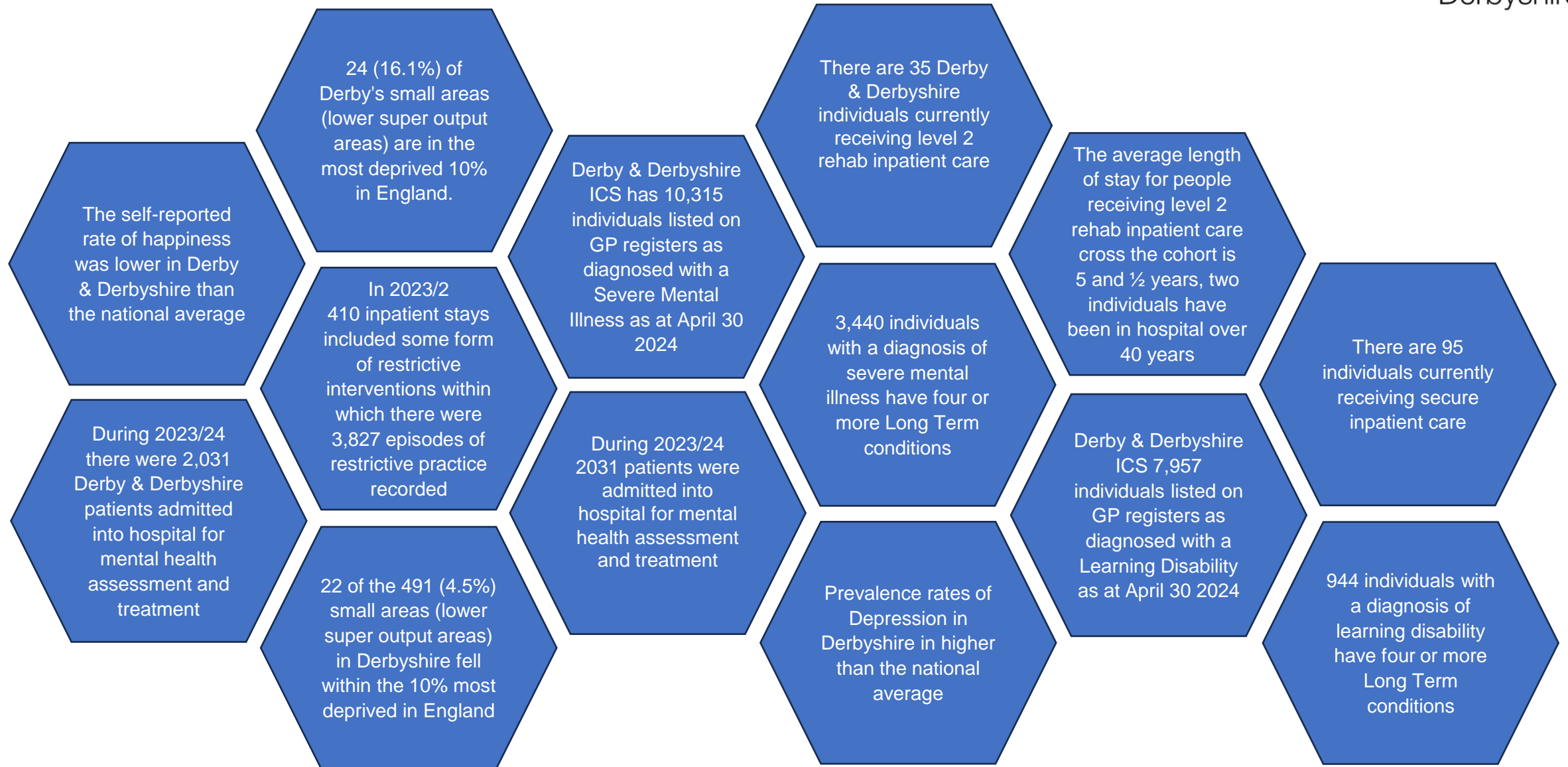
Our strategic plan is aligned to the national Mental Health, Learning Disability and Autism Inpatient Quality Transformation Program and shares the aim of improving quality and safety of care people experience in patient settings through the delivery of a transformed model of care.



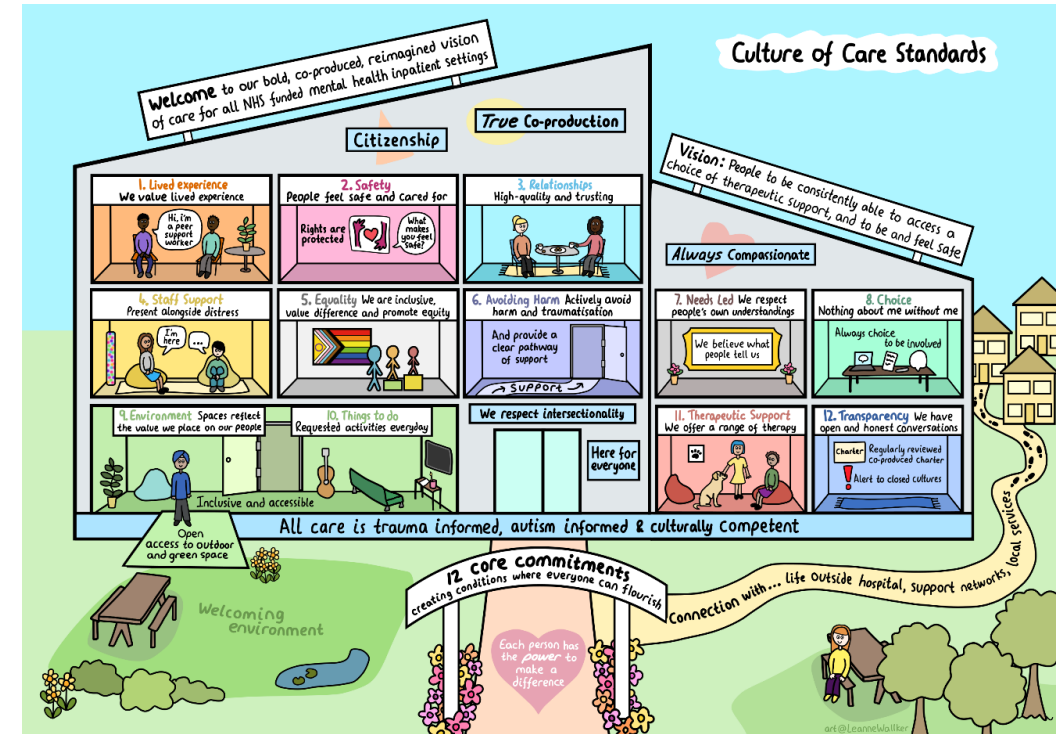
Our System of Strategic Partners



Our Case for Change – Key Facts at a Glance



We will work with system partners to develop and implement a strength-based shared approach to flexible care provision, risk management and oversight, which is underpinned through a focus on Human Rights



Culture of Care standards Ref: [NHS England » Culture of care standards for mental health inpatient services](#)

What this means:-

- We will ensure all providers of MH inpatient care achieve the national co-produced *Culture of Care Standards*
- We will require all providers of MH inpatient care to undertake stakeholder informed self-assessment and develop a service quality improvement plan
- We will ensure that all providers of MH Inpatient Care confirm the actions they will be taking to reduce barriers to access and improve provision of reasonable adaptations and adjustments to ensure equity of health outcomes
- We will support all providers of MH Inpatient Care to work collaboratively

We will ensure we are making effective use of resources by eliminating the use of long-stay detention with no therapeutic benefit, realigning resources to community support

What this means:-

- We will improve our care and accommodation provision
- We will expand our Care and Treatment Review Oversight Processes
- We will strengthen our discharge planning processes
- By March 2027 we will ensure there are no patients in long-stay level 2 rehabilitation services who are clinically ready for discharge without a clear discharge plan
- We will reduce our expenditure on long-term inpatient care and increase our expenditure on community care and support.

What this means:-

- We will strengthen our quality assurance framework to ensure it monitors adherence to the culture of care standards by all providers.
- We will report at our public Board session the number of people subject to restrictive practices in the previous quarter, the clinical oversight processes and the improvement actions being taken.
- We will embed a Mental Health Inpatient quality dashboard which will inform our contract management and decision-making processes.
- We will establish systematic and robust engagement mechanisms to capture the voices of people who are using our services and those with lived experience, professionals and other key stakeholders to inform our improvement programs.

We will ensure robust governance mechanisms (contractual and oversight) are in place to ensure our population receives inclusive, safe, compassionate care which promotes dignity and respect

We will ensure that reasonable adjustments are provided for those people who need them

What this means:-

- We will ensure that reasonable adjustments are implemented across all mental health inpatient services for those people who need them and ensure this is underpinned through the use of the Reasonable Adjustment Flag on people's digital records

What this means:-

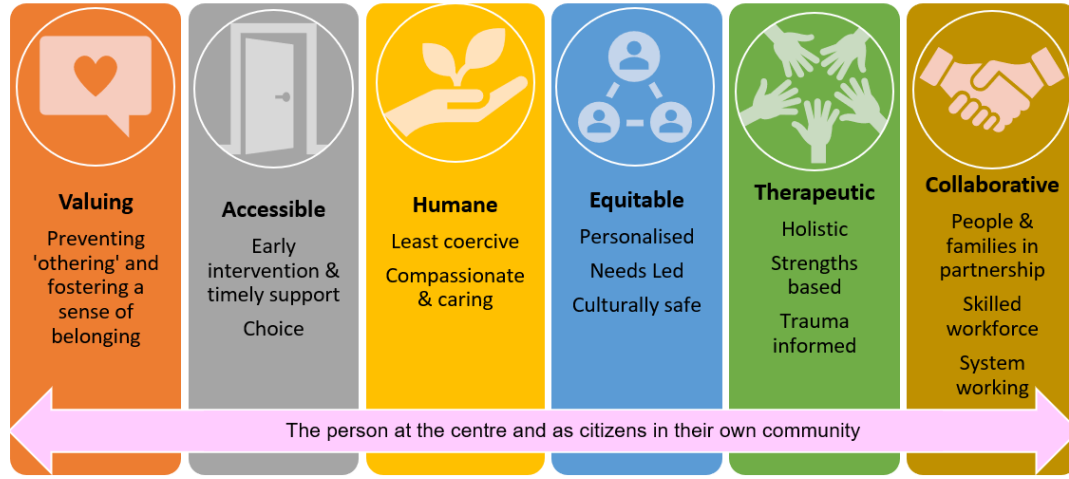
- We will embed the transformational improvements we have made with the roll out of our Living Well Model
- We will continue to improve access to our community services including uptake of annual health checks and Talking therapies recovery rates
- We will embed the changes we have made to our MH urgent and emergency care pathway ensuring people can access alternative services as close to their home as possible
- We will continue our focus on improving community service provision for people with a learning disability &/or autism in line with the principles of the national Building the Right Support Program

We will continue to improve community services, reducing the reliance on inpatient care to keep people safe & well

Our Three-Year Strategic Plan with Key Milestones

Guiding Policy	Key Action	Milestone Plan						Standard to be achieved by 31/3/27
		24/25				25/26	26/27	
		Q1	Q2	Q3	Q4			
Strength-based shared approach to flexible care provision, risk management and oversight	Self-Assessment against culture of care standards			█				Full adherence to Culture of care standards
	Service quality improvement action plan				█			
	Establishment of collaborative forum		█					
Eliminating the use of long-stay detention with no therapeutic benefit	Establishment of care and accommodation workstream	█						0 patients in long-stay level 2 rehabilitation services who are clinically ready for discharge without a clear discharge plan
	Expansion of Care and Treatment Review Processes				█			
	Additional capacity in place to strengthen discharge processes				█			
	Financial reporting across pathway					█		
Robust governance mechanisms in place to ensure inclusive, safe, compassionate care	Quality Assurance Framework reviewed		█					Robust quality assurance processes in place
	Quarterly reporting to ICB & ICP Board			█				
	Quality Dashboard Established			█				
	Program governance established	█						
Provision of reasonable adjustments for those who need them	Continued roll out of training across all providers re E&D, LD&A							Reasonable adjustments identified and acted upon
	Use of reasonable adjustment flag on digital records					█		
Continue to improve community services	Embed living well Model				█			Reduction in number of people accessing inpatient care not known to services
	Continue to Improve Access to services				█			
	Embed changes to MH Urgent Care Pathway				█			
	Delivery of the aims of the Building the Right Support national program LD&A					█		

Our Plan for What Good will Look like and How we will Measure it



NHS E MH Inpatient commissioning Framework 2023

Outcome measures:

- Reduction in the number of people **stranded** in hospital when ready to leave
- Reduction in the number of people **sent away** a distance from their home
- Reduction in the number of people **subject** to restrictive behaviours
- Reduction in the number of people **susceptible** to poor and abusive care
- Reduction in the number of people **stigmatised** and discriminated against / at risk of criminalisation

Standards and operational performance metrics:

- Reduction in number of inappropriate out of area placements for acute admissions
- Reduction in number of people with LD&A receiving inpatient care
- Reduction in number of people with SMI receiving level 2 inpatient rehabilitation services
- Reduction of people with SMI receiving secure MH Inpatient services
- Timely access to inpatient care:
 - reduction in waits in ED,
 - reduction in length of stay,
 - improved flow and effective discharges
- Safe and effective inpatient care
 - access to therapeutic interventions and personalised trauma informed care and support
- Least restrictive environment:
 - reduction in episodes and duration of restrictive practice reduction in/ minimising segregation and reducing seclusion
- Improved access to SMI and LD & Autism Health Checks
- Reasonable adjustments provided for all those people who may benefit from them
- Delivery of a care & accommodation summit focused on people with severe mental ill-health
- Access, outcomes and experience for people with protected characteristics and identified priority groups will be measured to ensure any equity gaps are minimised.