

Making Room for Dignity Programme

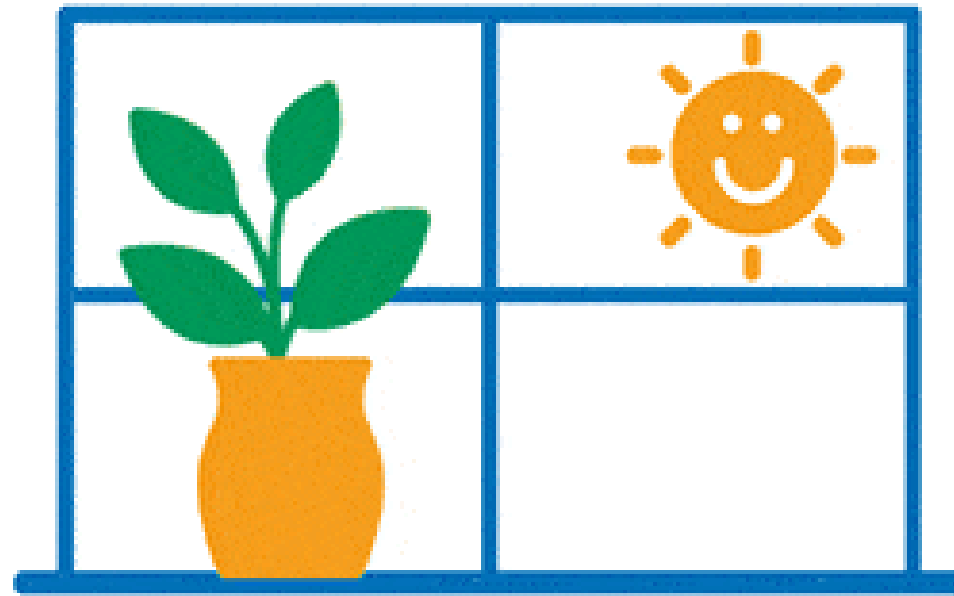
Andy Harrison
Senior Responsible Owner

Geoff Neild
Programme Director



Making Room for Dignity Programme

Making Room for Dignity



www.makingroomfordignityjobs.org.uk

What is Making Room for Dignity?

£150m for Mental Health inpatient facilities in Derby and Derbyshire

3 Key aims:

- Ending use of dormitories (shared bedroom spaces)
- Provide specialist care for older adults
- End out of area Psychiatric Intensive Care Unit (PICU) stays for Derby and Derbyshire service users

Why replace dormitories?

- Derbyshire has one of the highest number of mental health dormitory-style wards in the country. Even single rooms are not ensuite meaning all service users use share toilets and bathrooms.
- Shared dormitories can worsen service users' mental health. Single rooms with ensuite bathrooms improve person's care, privacy, dignity, safety and shorten their stay
- NHS England & Care Quality Commission require that mental health dormitories are replaced.

Why local Psychiatric Intensive Care?

- Derbyshire is the only area in England without a local Psychiatric Intensive Care Unit (PICU) – all service users requiring this service are placed out of county
- This means service users could be treated hundreds of miles from home - making visits by family and friends very difficult, at a time when support from loved ones is needed most
- NHS England & Care Quality Commission requirement for local PICU service

How have we worked together on the designs?

- Meetings with architects on key design areas
- Clinical staff at all meetings
- Service user representation at all meetings
- Service user surveys
- Service User and carers reference group
- Clinical Reference Group

What are we building or refurbishing?

Northern Derbyshire: Dormitory Eradication

- Derwent Unit: Adult Acute Mental Health Unit – Chesterfield
- Bluebell Ward: Older Adult Mental Health – Chesterfield

Southern Derbyshire: Dormitory Eradication

- Carsington Unit: Adult Acute Mental Health Unit – Derby
- Radbourne Unit: 2 Adult Acute Mental Health Wards – Derby

Derbyshire-wide: Specialist Services

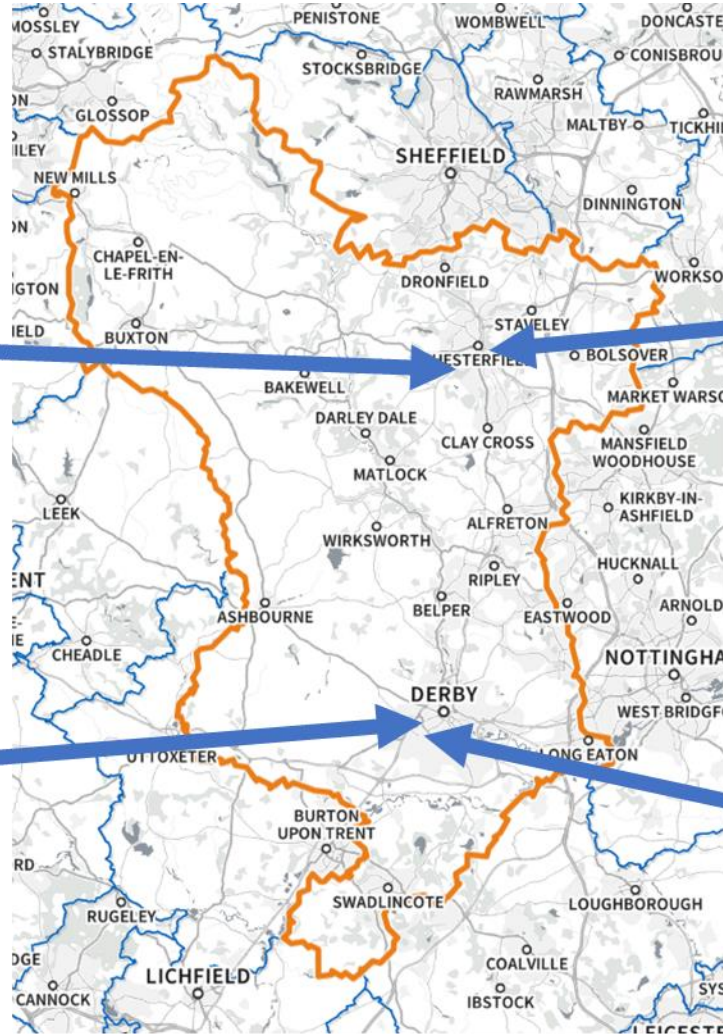
- Kingfisher House: Psychiatric Intensive Care Unit – Derby
- Audrey House: Enhanced Care Unit – Derby

Where are they?

**Walton
Hospital
Bluebell
Ward**



**Kingsway:
Carsington Unit
Audrey House
Kingfisher House**



**Chesterfield
Royal Hospital:
Derwent Unit**



**Radbourne
Unit:
Jasmin Ward
Orchid Ward**



What are we building or refurbishing?

Northern Derbyshire: Dormitory Eradication

- One Adult Acute Unit to replace Hartington Unit (new build)
- Unit to be called the Derwent Unit
- 54 beds – 3 x 18 bedded wards
- One Male ward; One Female ward; One Flexible gender ward including non-binary
- An increase of 2 beds in the North of the county

What are we building or refurbishing?



What are we building or refurbishing?

Southern Derbyshire: Dormitory Eradication:

- One Adult Acute Unit to replace part of Radbourne Unit (new build)
- Unit to be called the Carsington Unit at Kingsway Hospital
- 54 beds – 3 x 18 bedded wards
- Three Male wards
- Two Female Wards in the Radbourne Unit (Refurbishment)
- Wards to be called Jasmine and Orchid Wards
- 34 beds – 2 x 17 bedded wards

What will the new units look like?

<https://youtu.be/5EgrCU2obYg>

How will the new units look inside?

<https://youtu.be/PWWdDI8mhCs>

How much progress has been made?

Derwent Unit - Chesterfield

<https://youtu.be/KHaFW31Kx-A>

Carsington Unit and Kingfisher House - Derby

- <https://youtu.be/3Uu0qv89InE>

What are we building or refurbishing?

Northern Derbyshire: Mixed Age Ward / Dormitory Eradication

- One Older Adult Unit in a ward at Walton Hospital (Refurbishment)
- Ward to be called the Bluebell Ward
- 12 beds
- Flexible ward spaces for men and women
- Replaces the 12 Older Adult beds on Pleasely Ward at the Hartington Unit

What are we building or refurbishing?



What are we building or refurbishing?

Derbyshire: Local PICU facilities

- One Psychiatric Intensive Care Unit (new build)
- Unit to be called the Kingfisher House at Kingsway Hospital
- 14-bed male facility
- One Enhanced Care Unit (refurbishment)
- Unit to be called the Audrey House at Kingsway Hospital
- Eight-bed female facility

How will the specialist units look inside?



How will the specialist units look inside?

<https://1drv.ms/v/s!AgvdayJ3ivZYhL5k6L0Tkmw5> U-ESA

When will the Units be ready?

	First patients
Older Adults – Bluebell Ward	Aug 2024
Derwent Adult Acute Unit (Chesterfield)	Nov 2024
Carsington Adult Acute Unit (Kingsway)	Nov 2024
Radbourne Unit: Ward 32	Mar 2025
Radbourne Unit: Ward 35	Apr 2026
Audrey House – Enhanced Care Unit	Nov 2024
Kingfisher House - Psychiatric Intensive Care Unit	Mar 2025

How many additional staff are needed?

	Staffing WTE
Chesterfield Adult Acute Unit	33.11
Kingsway adult acute unit	27.15
Older adult Services	31.12
Radbourne Unit	15.85
Audrey House Enhanced Care Unit	55.46
Psychiatric Intensive Care Unit	70.48
	233.17 WTE

Questions?

Contact Details

Name: Andy Harrison

Title: SRO

Email:

andy.harrison1@nhs.net

Web: [Making Room for Dignity -
dormitory eradication programme](#)

Name: Geoff Neild

Title: Programme

Director

Email: geoff.neild@nhs.net



Contact Details



www.makingroomfordignityjobs.org.uk

